



**THE HUKKERI RURAL ELECTRIC CO-OPERATIVE  
SOCIETY LTD., HUKKERI - 591 309.**

Dist.:BELGAUM. [Karnataka State]

**ಹುಕ್ಕೇರಿ ಗ್ರಾಮೀಣ ವಿದ್ಯುತ್ ಸಹಕಾರಿ ಸಂಘ, ನಿಯಮಿತ.**

**ಹುಕ್ಕೇರಿ - ೫೯೧೩೦೯.**

ಜಿಲ್ಲೆ : ಬೆಳಗಾವಿ (ಕರ್ನಾಟಕ ರಾಜ್ಯ)

Regd No.AR/BG/456/69 dt.31-7-69  
Licence No.PWD/115/EIG/69 dt.19-11-69  
Licence No.KERC order dt.11-09-2001

Gen.: 265030  
M.D. (R) : 265632  
Fax : 08333-265677  
Grams : RELCOOP

KST - 5190190-0  
CST - 5195190-3  
w.e.f. 7-10-1970

Ref. No.: Accts/2018-19/ 4819

Date: 2 FEB 2019

To,

The Receiving Officer  
Karnataka Electricity Regulatory Commission  
#16C-1, Miller Tank Bed Area,  
Vasanthanagar,  
Bengaluru - 560052.

Sir,


Sub:- Replies to objections raised by AEQUS SEZ in the Petition  
No. HR-01.

Ref: Your letter no. B/07/18/1474 dated 28-01-2019.

We are submitting herewith the replies on all the points raised  
by the Objector AEQUS SEZ in six sets duly notarised. The copy of the  
replies is also marked to the Objector AEQUS SEZ. The replies are also  
sent to Email address: [kerc-ka@nic.in](mailto:kerc-ka@nic.in) as directed by your kindnesses.

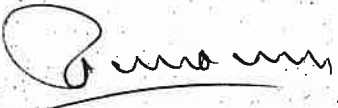
Thanking you,

Yours faithfully,

  
Managing Director

Copy to:

Mr. Vikram Annappa  
Representing Aequs SEZ Pvt. Ltd.,  
Aequs Special Economic Zone, 437A/1,  
Hattagi Village, Hukkeri Taluka,  
Dist. Belagavi.

  
NOTARY & ADVOCATE  
GOVERNMENT OF KARNATAKA  
HUKKERI Dist. Belagav



1911

1911

1911



**THE HUKKERI RURAL ELECTRIC CO-OPERATIVE  
SOCIETY LTD., HUKKERI - 591 309.**

Dist.:BELGAUM. [Karnataka State]

**ಹುಕ್ಕೇರಿ ಗ್ರಾಮೀಣ ವಿದ್ಯುತ್ ಸಹಕಾರಿ ಸಂಘ, ನಿಯಮಿತ.**

**ಹುಕ್ಕೇರಿ - ೫೯೧೩೦೯.**

**ಜಿಲ್ಲೆ: ಬೆಳಗಾವಿ (ಕರ್ನಾಟಕ ರಾಜ್ಯ)**

Regd No.AR/BG/456/69 dt.31-7-69  
Licence No.PWD/115/EIG/69 dt.19-11-69  
Licence No.KERC order dt.11-09-2001

Gen.: 265030  
M.D. (R) : 265632  
Fax : 08333-265677  
Grams : RELCOOP.

KST - 5190190-0  
CST - 5195190-3  
w.e.f. 7-10-1970

Ref. No.: Accts/2018-19/ 4819

Date: **2 FEB 2019**

To,  
The Receiving Officer  
Karnataka Electricity Regulatory Commission  
#16C-1, Miller Tank Bed Area,  
Vasanthanagar,  
Bengaluru - 560052.

Sir,

Sub:- Replies to objections raised by AEQUS SEZ in the Petition  
No. HR-01.

Ref: Your letter no. B/07/18/1474 dated 28-01-2019.

We are submitting herewith the replies on all the points raised  
by the Objector AEQUS SEZ in six sets duly notarised. The copy of the  
replies is also marked to the Objector AEQUS SEZ. The replies are also  
sent to Email address: [kerc-ka@nic.in](mailto:kerc-ka@nic.in) as directed by your kindnesses.

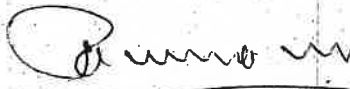
Thanking you,

Yours faithfully,

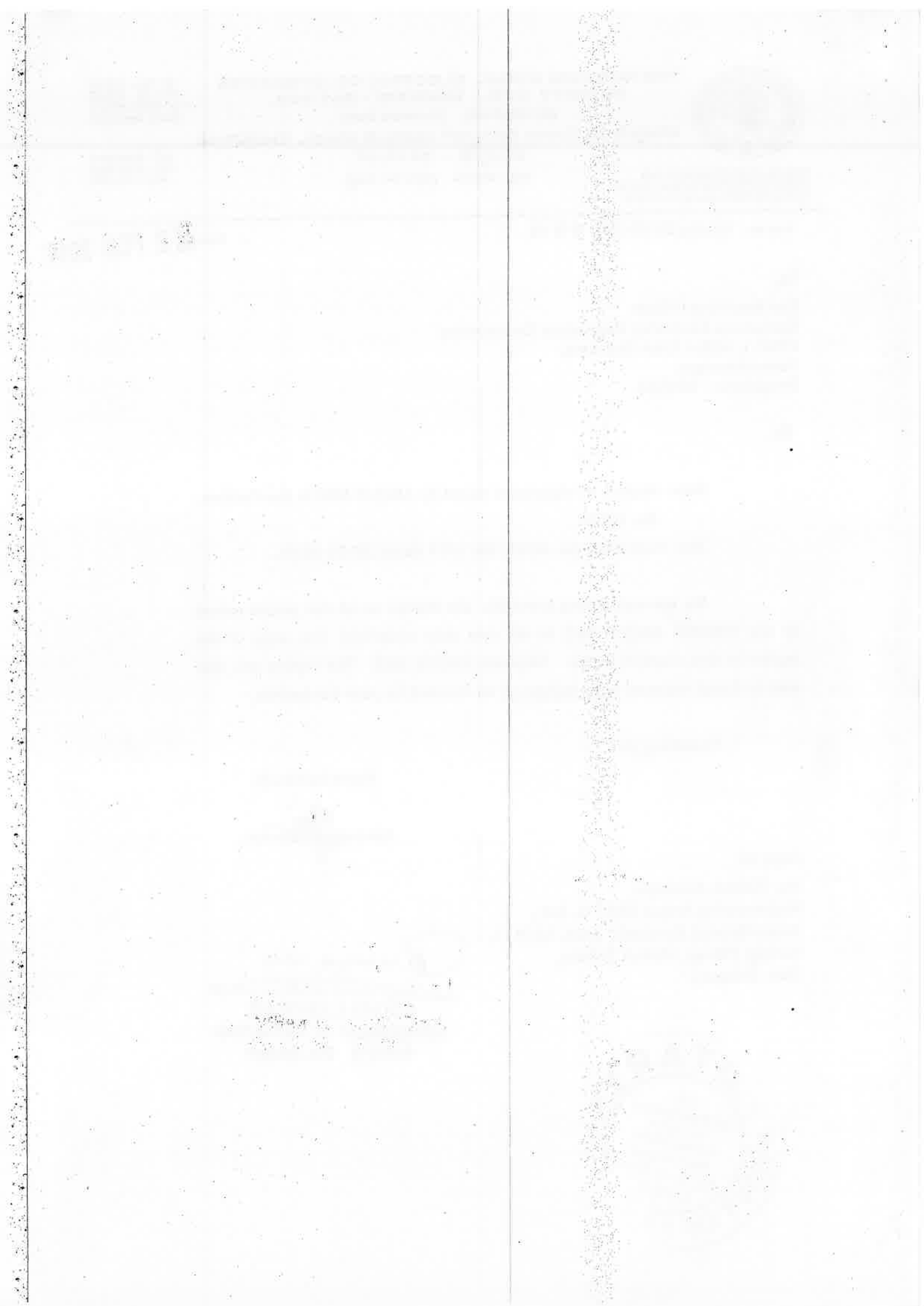
  
Managing Director

Copy to:

Mr. Vikram Annappa  
Representing Aequs SEZ Pvt. Ltd.,  
Aequs Special Economic Zone, 437A/1,  
Hattagi Village, Hukkeri Taluka,  
Dist. Belagavi.

  
12.02.2019  
NOTARY & ADVOCATE  
GOVERNMENT OF KARNATAKA  
HUKKERI Dist. Belagavi





BEFORE THE KARNATAKA ELECTRICITY REGULATORY COMMISSION AT BENGALURU

FILE NO. \_\_\_\_\_

CASE NO. \_\_\_\_\_

IN THE MATTER OF:

APPLICATION UNDER SECTION 62 OF THE ELECTRICITY ACT, 2003 READ WITH KERC (TARIFF) REGULATIONS, 2000 AND REGULATION 2.3 OF KERC (TERMS AND CONDITIONS FOR DETERMINATION OF TARIFF FOR DISTRIBUTION AND RETAIL SALE OF ELECTRICITY) REGULATIONS, 2006 FOR DETERMINATION OF AGGREGATE REVENUE REQUIREMENT (ARR) FOR THE PERIOD FROM FY-2020 TO 2022 AND TARIFF FILLING FOR FY-2020.

AND

IN THE MATTER OF:

HUKERI RURAL ELECTRIC CO-OPERATIVE  
SOCIETY LIMITED  
HUKERI TALUKA, BELAGAVI DIST - 591 309

...APPLICANT

AND

AEQUS SEZ  
Hattaragi  
Tq: Hukkeri

... OBJECTOR

AFFIDAVIT

I Sri Sanjaykumar Pujari, son of Siddappa Pujari, aged about 52 years working as Managing Director of the Applicant and residing at Hukeri, do hereby solemnly affirm and state on oath as under.

I am the Managing Director, HRECS Hukeri duly authorised to make this affidavit.

The Statements made in the reply herein now shown to me, are true to my knowledge and the statements made are based on the information. I believed them to be true.


Solemnly affirmed at Hukeri on this day 02-02-2019 that the contents of the above affidavit are true to my knowledge, no part of it is false and no material has been concealed there from.

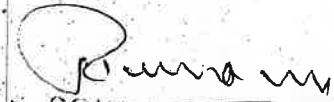
Hukeri  
Date: 05-02-2019

Identified by me

  
ACCOUNTS OFFICER



  
DEPONENT  
Managing Director  
The Hukeri Rural Electric  
Co-op Society Ltd Hukeri.

  
T.S. SODDANAVAR  
NOTARY & ADVOCATE  
GOVERNMENT OF KARNATAKA  
HUKKERI Dist. Belagav

BEFORE THE KARNATAKA ELECTRICITY REGULATORY COMMISSION AT  
BENGALURU

FILE NO. \_\_\_\_\_

CASE NO. \_\_\_\_\_

IN THE MATTER OF:

APPLICATION UNDER SECTION 62 OF THE ELECTRICITY ACT, 2003 READ WITH KERC (TARIFF) REGULATIONS, 2000 AND REGULATION 2.3 OF KERC (TERMS AND CONDITIONS FOR DETERMINATION OF TARIFF FOR DISTRIBUTION AND RETAIL SALE OF ELECTRICITY) REGULATIONS, 2006 FOR DETERMINATION OF AGGREGATE REVENUE REQUIREMENT (ARR) FOR THE PERIOD FROM FY-2020 TO 2022 AND TARIFF FILLING FOR FY-2020..

AND

IN THE MATTER OF:

HUKERI RURAL ELECTRIC CO-OPERATIVE  
SOCIETY LIMITED  
HUKERI TALUKA, BELAGAVI DIST - 591 309

...APPLICANT

AND

AEQUS SEZ  
Hattaragi  
Tq: Hukkeri



... OBJECTOR

REPLY TO THE OBJECTION FILED BY AEQUS SEZ HATTARAGI

The above named applicant respectfully submits as follows.

*Chim*  
Managing Director  
The Hukeri Rural Electric  
Co-operative Society Ltd., Hukeri.

*T.S. Soddanavar*  
T.S. SODDANAVAR  
NOTARY & ADVOCATE  
GOVERNMENT OF KARNATAKA  
HUKKERI, Dist. Belagavi

Replies to objections of AEQUS SEZ Pvt. Ltd.

| Sl. No | Objections of AEQUS SEZ Pvt. Ltd.  | Replies by HRECS   |
|--------|--|--|
| I.     | <p>Following observation has been made in the The Hukkeri Electric Co-Operative Society Ltd.(HRECS)</p> <p>a) In ARR application filling for FY20, in table 42, page No.102, projection of sales of energy for ASEZ for FY20 has been shown as 35.427 MU's and the actual sale of energy for FY18 to ASEZ is shown at 18.43 MU's.</p> <p><b>Aequs:</b> Based on the Aequs consumers demand the energy consumption estimated for FY20 is 23.67 MU's as ASEZ filling for FY 20. On this basis, the estimated power requirement at IF point is considered at 24.80 MU's. Similarly the actual quantity of power purchased from HRECS at IF point for FY 18 is 18.98 MU's and not 18.43 MU's shown in HRECS filling.</p> | <p>HRECS has estimated as sales on the basis of CAGR for 5 years, as purchase of power by the AEQUS has not seen received by HRECS. However HRECS will abide the decision of the Hon'ble Commission in this regards.</p>   |
| II.    | <p>a) In page No.117, para 25.2.7 HRECS has requested for increase in PP cost for FY 20 to Rs. 7.066/Kwh and in page No. 118, in the prayer,</p> <p>b) HRECS has requested the Hon'ble Commission KERC to approve the PP cost of Rs 7.066/Kwh as mentioned in para 25.2.7, and</p> <p>c) Similarly in page No. 135, under table 63, HRECS have requested for increase in Tariff for ASEZ by INR 1.13/Kwh.</p>  | <p>It is true that AEQUS is the distribution licensee, the percentage increase proposed by HRECS was uniform and it was presumed that different rate hike for different category might invite criticism from other category. HRECS proposed at Rs. 1.13 per unit was to recover the deficit anticipated by HRECS. However HRECS will abide by the decision of the Hon'ble Commission in this regard.</p> |



*[Signature]*  
**Managing Director**  
 The Hukkeri Rural Electric  
 Co-operative Society Ltd., Hukkeri

*[Signature]*  
 T.S. JODANAVAR  
 NOTARY & ADVOCATE  
 GOVERNMENT OF KARNATAKA  
 HUKKERI Dist. Belagav

1954

...

...

...

...

1955

...

...

...


...



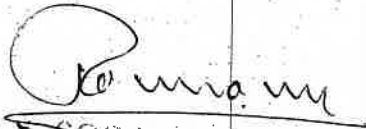
Aegus: While fixing the PP rate for FY 19, the Hon'ble Commission considering the deemed distribution licensee status of AEQUS, in our Tariff Order dated 14<sup>th</sup> May, 2018 approved the power purchase rate from HRECS at Rs. 5.936 units based on following parameters:

i) KERC Considered, the total purchase cost of the State excluding KPC & Other Hydro power, as the basis to arrive at the average cost of power purchase the generation and to that Rs.1/unit is added, to have average rate, towards grid support charges, trading margins and energy handling charges to determine the power purchase cost.

ii) The end PP rate of Rs. 5.936/unit is inclusive of trading margin payable to HRECS besides charges payable to KPTCL, PGCIL, SLDC and POSOCO.

  
Managing Director  
HRECS Ltd., Hukeri



  
T.S. SODDANAVAR  
NOTARY & ADVOCATE  
GOVERNMENT OF KARNATAKA  
HUKKERI Dist. Belagav

| Year | Jan | Feb | Mar | Apr | May | June | July | Aug | Sept | Oct | Nov | Dec | Total |
|------|-----|-----|-----|-----|-----|------|------|-----|------|-----|-----|-----|-------|
| 1900 |     |     |     |     |     |      |      |     |      |     |     |     |       |
| 1901 |     |     |     |     |     |      |      |     |      |     |     |     |       |
| 1902 |     |     |     |     |     |      |      |     |      |     |     |     |       |
| 1903 |     |     |     |     |     |      |      |     |      |     |     |     |       |
| 1904 |     |     |     |     |     |      |      |     |      |     |     |     |       |
| 1905 |     |     |     |     |     |      |      |     |      |     |     |     |       |
| 1906 |     |     |     |     |     |      |      |     |      |     |     |     |       |
| 1907 |     |     |     |     |     |      |      |     |      |     |     |     |       |
| 1908 |     |     |     |     |     |      |      |     |      |     |     |     |       |
| 1909 |     |     |     |     |     |      |      |     |      |     |     |     |       |
| 1910 |     |     |     |     |     |      |      |     |      |     |     |     |       |
| 1911 |     |     |     |     |     |      |      |     |      |     |     |     |       |
| 1912 |     |     |     |     |     |      |      |     |      |     |     |     |       |
| 1913 |     |     |     |     |     |      |      |     |      |     |     |     |       |
| 1914 |     |     |     |     |     |      |      |     |      |     |     |     |       |
| 1915 |     |     |     |     |     |      |      |     |      |     |     |     |       |
| 1916 |     |     |     |     |     |      |      |     |      |     |     |     |       |
| 1917 |     |     |     |     |     |      |      |     |      |     |     |     |       |
| 1918 |     |     |     |     |     |      |      |     |      |     |     |     |       |
| 1919 |     |     |     |     |     |      |      |     |      |     |     |     |       |
| 1920 |     |     |     |     |     |      |      |     |      |     |     |     |       |
| 1921 |     |     |     |     |     |      |      |     |      |     |     |     |       |
| 1922 |     |     |     |     |     |      |      |     |      |     |     |     |       |
| 1923 |     |     |     |     |     |      |      |     |      |     |     |     |       |
| 1924 |     |     |     |     |     |      |      |     |      |     |     |     |       |
| 1925 |     |     |     |     |     |      |      |     |      |     |     |     |       |
| 1926 |     |     |     |     |     |      |      |     |      |     |     |     |       |
| 1927 |     |     |     |     |     |      |      |     |      |     |     |     |       |
| 1928 |     |     |     |     |     |      |      |     |      |     |     |     |       |
| 1929 |     |     |     |     |     |      |      |     |      |     |     |     |       |
| 1930 |     |     |     |     |     |      |      |     |      |     |     |     |       |
| 1931 |     |     |     |     |     |      |      |     |      |     |     |     |       |
| 1932 |     |     |     |     |     |      |      |     |      |     |     |     |       |
| 1933 |     |     |     |     |     |      |      |     |      |     |     |     |       |
| 1934 |     |     |     |     |     |      |      |     |      |     |     |     |       |
| 1935 |     |     |     |     |     |      |      |     |      |     |     |     |       |
| 1936 |     |     |     |     |     |      |      |     |      |     |     |     |       |
| 1937 |     |     |     |     |     |      |      |     |      |     |     |     |       |
| 1938 |     |     |     |     |     |      |      |     |      |     |     |     |       |
| 1939 |     |     |     |     |     |      |      |     |      |     |     |     |       |
| 1940 |     |     |     |     |     |      |      |     |      |     |     |     |       |
| 1941 |     |     |     |     |     |      |      |     |      |     |     |     |       |
| 1942 |     |     |     |     |     |      |      |     |      |     |     |     |       |
| 1943 |     |     |     |     |     |      |      |     |      |     |     |     |       |
| 1944 |     |     |     |     |     |      |      |     |      |     |     |     |       |
| 1945 |     |     |     |     |     |      |      |     |      |     |     |     |       |
| 1946 |     |     |     |     |     |      |      |     |      |     |     |     |       |
| 1947 |     |     |     |     |     |      |      |     |      |     |     |     |       |
| 1948 |     |     |     |     |     |      |      |     |      |     |     |     |       |
| 1949 |     |     |     |     |     |      |      |     |      |     |     |     |       |
| 1950 |     |     |     |     |     |      |      |     |      |     |     |     |       |
| 1951 |     |     |     |     |     |      |      |     |      |     |     |     |       |
| 1952 |     |     |     |     |     |      |      |     |      |     |     |     |       |
| 1953 |     |     |     |     |     |      |      |     |      |     |     |     |       |
| 1954 |     |     |     |     |     |      |      |     |      |     |     |     |       |
| 1955 |     |     |     |     |     |      |      |     |      |     |     |     |       |
| 1956 |     |     |     |     |     |      |      |     |      |     |     |     |       |
| 1957 |     |     |     |     |     |      |      |     |      |     |     |     |       |
| 1958 |     |     |     |     |     |      |      |     |      |     |     |     |       |
| 1959 |     |     |     |     |     |      |      |     |      |     |     |     |       |
| 1960 |     |     |     |     |     |      |      |     |      |     |     |     |       |
| 1961 |     |     |     |     |     |      |      |     |      |     |     |     |       |
| 1962 |     |     |     |     |     |      |      |     |      |     |     |     |       |
| 1963 |     |     |     |     |     |      |      |     |      |     |     |     |       |
| 1964 |     |     |     |     |     |      |      |     |      |     |     |     |       |
| 1965 |     |     |     |     |     |      |      |     |      |     |     |     |       |
| 1966 |     |     |     |     |     |      |      |     |      |     |     |     |       |
| 1967 |     |     |     |     |     |      |      |     |      |     |     |     |       |
| 1968 |     |     |     |     |     |      |      |     |      |     |     |     |       |
| 1969 |     |     |     |     |     |      |      |     |      |     |     |     |       |
| 1970 |     |     |     |     |     |      |      |     |      |     |     |     |       |
| 1971 |     |     |     |     |     |      |      |     |      |     |     |     |       |
| 1972 |     |     |     |     |     |      |      |     |      |     |     |     |       |
| 1973 |     |     |     |     |     |      |      |     |      |     |     |     |       |
| 1974 |     |     |     |     |     |      |      |     |      |     |     |     |       |
| 1975 |     |     |     |     |     |      |      |     |      |     |     |     |       |
| 1976 |     |     |     |     |     |      |      |     |      |     |     |     |       |
| 1977 |     |     |     |     |     |      |      |     |      |     |     |     |       |
| 1978 |     |     |     |     |     |      |      |     |      |     |     |     |       |
| 1979 |     |     |     |     |     |      |      |     |      |     |     |     |       |
| 1980 |     |     |     |     |     |      |      |     |      |     |     |     |       |
| 1981 |     |     |     |     |     |      |      |     |      |     |     |     |       |
| 1982 |     |     |     |     |     |      |      |     |      |     |     |     |       |
| 1983 |     |     |     |     |     |      |      |     |      |     |     |     |       |
| 1984 |     |     |     |     |     |      |      |     |      |     |     |     |       |
| 1985 |     |     |     |     |     |      |      |     |      |     |     |     |       |
| 1986 |     |     |     |     |     |      |      |     |      |     |     |     |       |
| 1987 |     |     |     |     |     |      |      |     |      |     |     |     |       |
| 1988 |     |     |     |     |     |      |      |     |      |     |     |     |       |
| 1989 |     |     |     |     |     |      |      |     |      |     |     |     |       |
| 1990 |     |     |     |     |     |      |      |     |      |     |     |     |       |
| 1991 |     |     |     |     |     |      |      |     |      |     |     |     |       |
| 1992 |     |     |     |     |     |      |      |     |      |     |     |     |       |
| 1993 |     |     |     |     |     |      |      |     |      |     |     |     |       |
| 1994 |     |     |     |     |     |      |      |     |      |     |     |     |       |
| 1995 |     |     |     |     |     |      |      |     |      |     |     |     |       |
| 1996 |     |     |     |     |     |      |      |     |      |     |     |     |       |
| 1997 |     |     |     |     |     |      |      |     |      |     |     |     |       |
| 1998 |     |     |     |     |     |      |      |     |      |     |     |     |       |
| 1999 |     |     |     |     |     |      |      |     |      |     |     |     |       |
| 2000 |     |     |     |     |     |      |      |     |      |     |     |     |       |
| 2001 |     |     |     |     |     |      |      |     |      |     |     |     |       |
| 2002 |     |     |     |     |     |      |      |     |      |     |     |     |       |
| 2003 |     |     |     |     |     |      |      |     |      |     |     |     |       |
| 2004 |     |     |     |     |     |      |      |     |      |     |     |     |       |
| 2005 |     |     |     |     |     |      |      |     |      |     |     |     |       |
| 2006 |     |     |     |     |     |      |      |     |      |     |     |     |       |
| 2007 |     |     |     |     |     |      |      |     |      |     |     |     |       |
| 2008 |     |     |     |     |     |      |      |     |      |     |     |     |       |
| 2009 |     |     |     |     |     |      |      |     |      |     |     |     |       |
| 2010 |     |     |     |     |     |      |      |     |      |     |     |     |       |
| 2011 |     |     |     |     |     |      |      |     |      |     |     |     |       |
| 2012 |     |     |     |     |     |      |      |     |      |     |     |     |       |
| 2013 |     |     |     |     |     |      |      |     |      |     |     |     |       |
| 2014 |     |     |     |     |     |      |      |     |      |     |     |     |       |
| 2015 |     |     |     |     |     |      |      |     |      |     |     |     |       |
| 2016 |     |     |     |     |     |      |      |     |      |     |     |     |       |
| 2017 |     |     |     |     |     |      |      |     |      |     |     |     |       |
| 2018 |     |     |     |     |     |      |      |     |      |     |     |     |       |
| 2019 |     |     |     |     |     |      |      |     |      |     |     |     |       |
| 2020 |     |     |     |     |     |      |      |     |      |     |     |     |       |
| 2021 |     |     |     |     |     |      |      |     |      |     |     |     |       |
| 2022 |     |     |     |     |     |      |      |     |      |     |     |     |       |
| 2023 |     |     |     |     |     |      |      |     |      |     |     |     |       |
| 2024 |     |     |     |     |     |      |      |     |      |     |     |     |       |
| 2025 |     |     |     |     |     |      |      |     |      |     |     |     |       |
| 2026 |     |     |     |     |     |      |      |     |      |     |     |     |       |
| 2027 |     |     |     |     |     |      |      |     |      |     |     |     |       |
| 2028 |     |     |     |     |     |      |      |     |      |     |     |     |       |
| 2029 |     |     |     |     |     |      |      |     |      |     |     |     |       |
| 2030 |     |     |     |     |     |      |      |     |      |     |     |     |       |
| 2031 |     |     |     |     |     |      |      |     |      |     |     |     |       |
| 2032 |     |     |     |     |     |      |      |     |      |     |     |     |       |
| 2033 |     |     |     |     |     |      |      |     |      |     |     |     |       |
| 2034 |     |     |     |     |     |      |      |     |      |     |     |     |       |
| 2035 |     |     |     |     |     |      |      |     |      |     |     |     |       |
| 2036 |     |     |     |     |     |      |      |     |      |     |     |     |       |
| 2037 |     |     |     |     |     |      |      |     |      |     |     |     |       |
| 2038 |     |     |     |     |     |      |      |     |      |     |     |     |       |
| 2039 |     |     |     |     |     |      |      |     |      |     |     |     |       |
| 2040 |     |     |     |     |     |      |      |     |      |     |     |     |       |
| 2041 |     |     |     |     |     |      |      |     |      |     |     |     |       |
| 2042 |     |     |     |     |     |      |      |     |      |     |     |     |       |
| 2043 |     |     |     |     |     |      |      |     |      |     |     |     |       |
| 2044 |     |     |     |     |     |      |      |     |      |     |     |     |       |
| 2045 |     |     |     |     |     |      |      |     |      |     |     |     |       |
| 2046 |     |     |     |     |     |      |      |     |      |     |     |     |       |
| 2047 |     |     |     |     |     |      |      |     |      |     |     |     |       |
| 2048 |     |     |     |     |     |      |      |     |      |     |     |     |       |
| 2049 |     |     |     |     |     |      |      |     |      |     |     |     |       |
| 2050 |     |     |     |     |     |      |      |     |      |     |     |     |       |

1900

1901

1902